

## Afternoon Tea Selection

### English Breakfast

A robust, full bodied cup with a concentrated character of malt and deep undertones that welcome a little milk and sugar. Contains Ceylon for flavour, Assam for strength and Kenya for colour. This tea is a great cup that can be enjoyed throughout the day.

### Darjeeling

Referred to as 'the champagne of teas', this has a light golden bouquet with characteristics matching the Muscatel grape. Delicate flavour and aroma, bright floral cup accentuated by natural fruity nuances.

### Earl Grey

Symphony of robust Assam leaves with a light liquouring of cold pressed bergamot. Blend of classic tea crafted to define how Earl Grey should taste. Deeply aromatic with bold flavour.

### Lady Grey

Later addition tea, with the same characteristics as her husband, Earl Grey, with undertones of lemon and citrus oils.

### Peppermint

Considered the aromatherapist's best friend, an invigorating herbal punch. Fresh and rich in mint oils with uplifting aromas, perfect for settling that 'tied up' stomach.

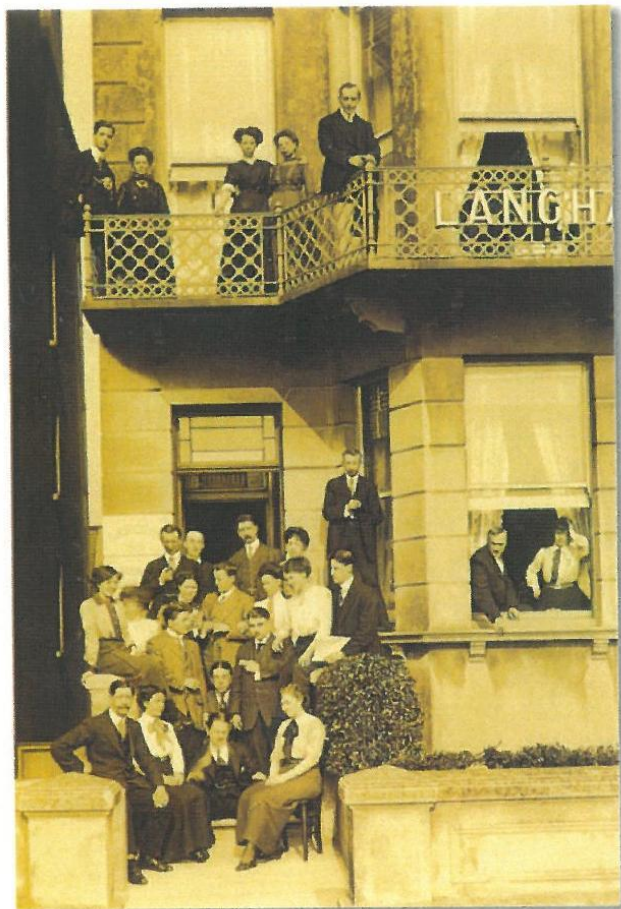
# langham hotel



This fictional tea party, created as an advertisement by the tea company Horniman's, shows Queen Victoria (right), Florence Nightingale and Prime Minister William Gladstone (seated left) taking tea and toast together. (*The Tea Council*)

## Afternoon Tea Menu

### Langham Restaurant



Opening of The Langham Hotel 24th March 1913

*A family-run hotel on Eastbourne's seafront, the Langham Hotel celebrated the 100<sup>th</sup> anniversary of its opening in March 2013.*

*With spectacular views of the coastline across the bay and towards the pier, the Langham Restaurant provides the ideal setting to relax and enjoy our delicious afternoon tea.*

## **Langham Grand Afternoon Tea**

(served from 3.00 to 5.00pm)

### **Sandwich Selection:**

Egg mayonnaise on brown

Ham and mustard on white

Cream cheese and cucumber on white

Smoked salmon on brown

\*\*\*\*\*

Freshly baked scones with strawberry jam and

Cornish clotted cream

\*\*\*\*\*

Selection of homemade cakes and pastries

\*\*\*\*\*

Choice of teas

**£21.00 per person**

Complement your Grand Afternoon Tea

with a glass of Prosecco

**£24.00 per person**

## **Champagne Afternoon Tea**

with a glass of House Champagne

**£27.00 per person**

### **Tea Selection:**

English Breakfast Tea

Darjeeling

Earl Grey

Lady Grey

Peppermint